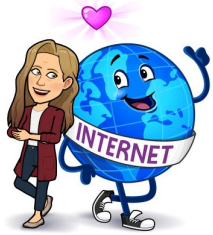




# ITRT TECH MINUTE

In an effort to foster proper communication throughout our school system, we thought it wise to help spread the proper terminology. This does not stop with [computer & internet vocabulary](#). We hope this update will help all of us speak the same language so as the students progress we have a common language.



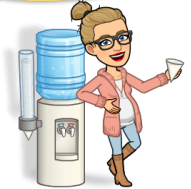
Just to be clear, when we talk about **websites** we refer to the collection of related **web** resources, such as **web** pages and multimedia content. They typically have a common domain name and published on at least one **web** server.

Many of us, myself included, are guilty of just saying “go to the website” when we should be more specific. You know many examples, such as Amazon.com, IXL.com, Khanacademy.org, but the most important is our own nucps.net.

Speaking of important websites, teachers in our district are fortunate to have access to edit their own page on the NUCPS website. There are many pages where teachers have loaded all their content so that students have access to it at all times. If an assignment is lost, the student knows that there is another one accessible on their teacher’s website page. Gone are the days of having to leave messages on the homework hotline. If you need help with your website page, please send me an email. I can help you use it as the communication tool it is.

Often times we tell our students to go to Google, but are they going to the appropriate spot/browser? Read below to make sure you are being as clear as possible to the students.

let's  
**DISCUSS**



“Go to Google” means we want students to go to [google.com](https://www.google.com), a search engine that allows students to look up information.

“Go to Google Classroom” means we want students to [classroom.google.com](https://classroom.google.com), an LMS where students can access materials or assignments for a class that the teacher has posted.

“Go to Google Drive/Go to your Drive” means you want students to [drive.google.com](https://drive.google.com), where students have access to any files they have created through their @nucps.net account.

“Go to Gmail/Go to your email” means you want students to go to [gmail.com](https://www.gmail.com). This can be confusing as middle and elementary students do not have access to email through their @nucps.net accounts and will get an error message.

## Learning Management Systems

A LMS is an organizational delivery tool that allows for the online distribution of content to learners. The system is closed to the general public, only registered users can access the content. An LMS enables educators to deploy resources, differentiate instruction, distribute tasks, and track progress enabling both synchronous and asynchronous use. There are multiple LMSs (Blackboard, Canvas, Edmodo, Moodle, Schoology); Google Classroom is a basic LMS and the chosen flavor of NUCPS. Google Classroom enables teachers to distribute content, create (self-grading) assessments, and track student progress. Google Classroom allows for easy creation (slides, docs, spreadsheets, quizzes, forms) and distribution of content. Limitations include the inability to communicate/synchronize with PowerSchool, so any grades must be manually entered in PowerSchool. Another limitation is the inability to create differentiated small groups within the virtual classroom. For more information on learning management systems:



<https://www.pcmog.com/picks/the-best-lms-learning-management-systems>

## Keyboard Quick Stop: Did you know...



Windows + L to lock your computer. This will immediately bring you back to your sign-in screen. Once you sign in, your applications and windows will be right where they were before.